

HOW TO INTALL LIGHTROOM PRESETS

by Krystal Designs

NOTE:

1. These presets were designed to be used with the following file types: RAW, JPG, PNG
2. These presets has been successfully tested with Adobe Lightroom 4-5 Under exposed or over exposed images may not give you the best result.

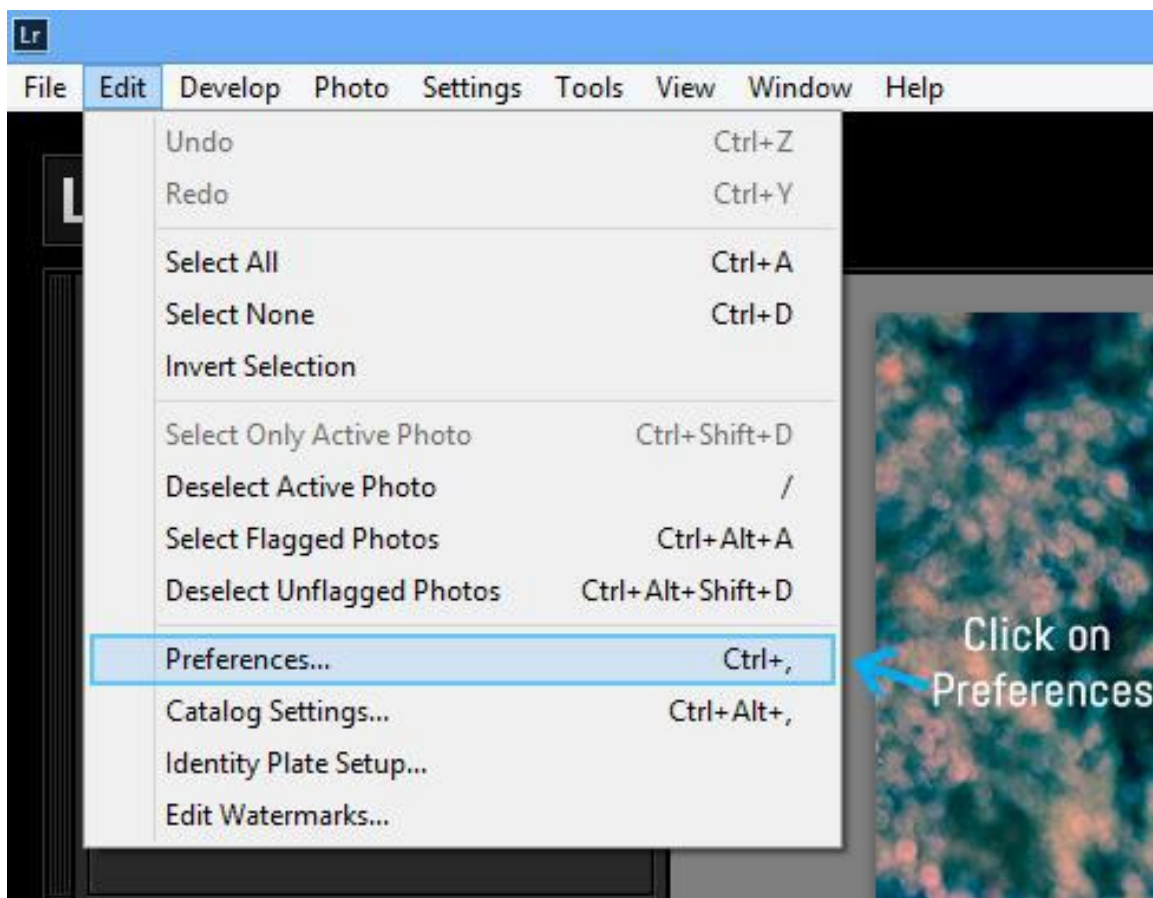
Windows

Step - 1

1. Extract the .zip file and put the presets into the folder of your choice.

Step – 2

1. Open Adobe Lightroom
2. Click on the Edit Menu at the top then click on the Preferences.

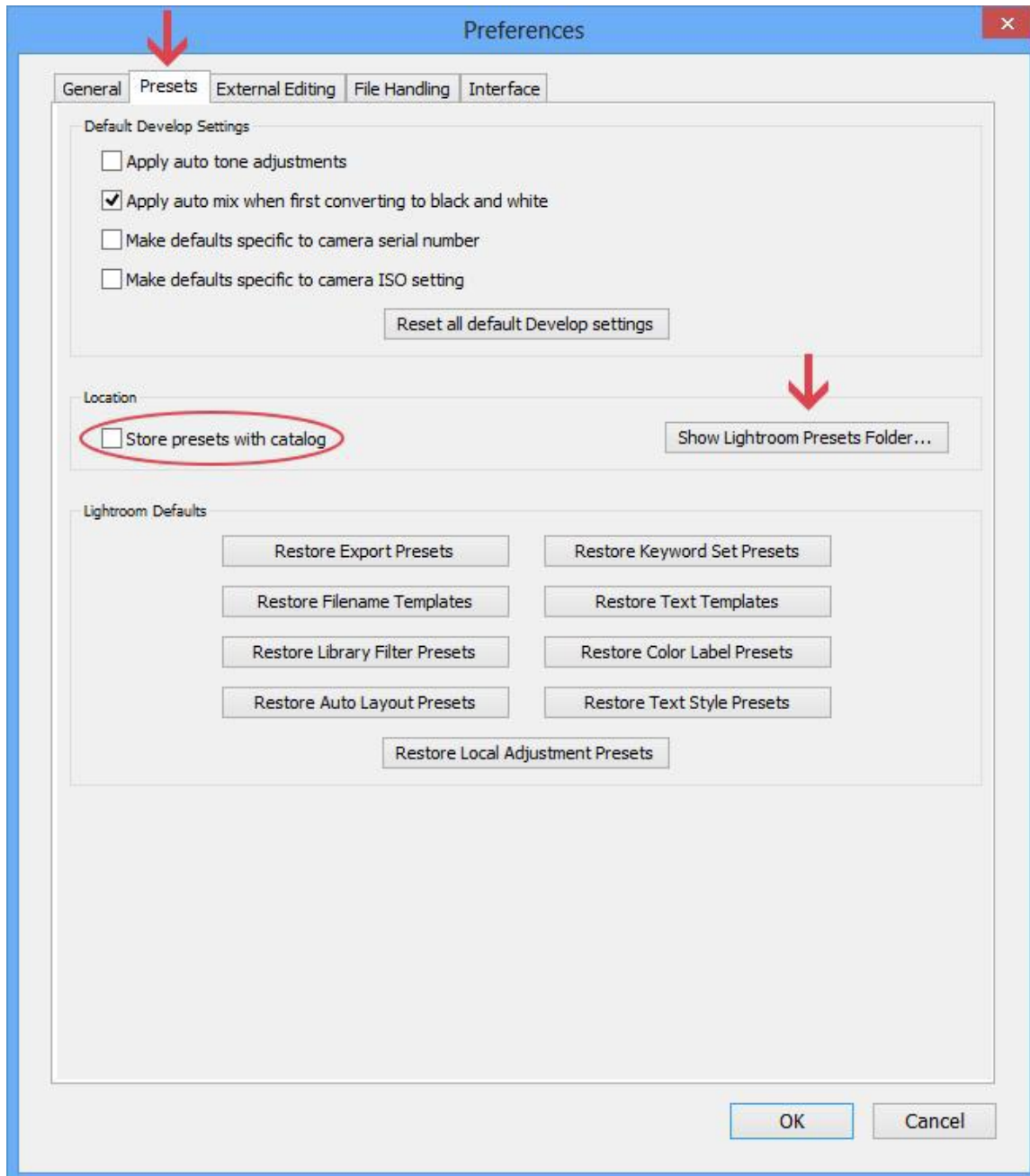


Step - 3

1. There will be a new window that appears.

Select the Presets tab.

2. Click on the button labeled Show Lightroom Presets Folder.



Step - 4

1. A folder Adobe that appears. Click on the folder named Lightroom and then click on Develop Presets. Copy the folders/presets into the Develop Presets folder

Step - 5

1. Simply restart Lightroom and that's it. Your presets can now be found in the Presets section of the Develop module of Lightroom.

Mac OS X

1. Download the WinRAR from the link (<http://www.win-rar.com/download.html?&L=0>)
2. Extract the .zip file and put the presets into the folder of your choice.
4. In this folder you will find the all presets, they

are the files with the .lrtemplate extension.

5. Go into Lightroom and click on Edit at the top and then click on Preferences.

6. There will be a new window that appears. Select the Presets tab.

6. Click on the button labeled Show Lightroom Presets Folder.

7. A new folder Adobe that appears. Click on the folder named Lightroom and then click on Develop Presets. Copy the folders with your presets into the Develop Presets folder

8. Simply restart Lightroom and that's it. Your presets can now be found in the Presets section of the Develop module of Lightroom.

PLEASE DON'T FORGET TO
RATE US